

Dynamic Load Management (DLM) Program Guide

The DLM Programs provide new ways for NYSEG customers to earn cash while creating a sustainable energy future!

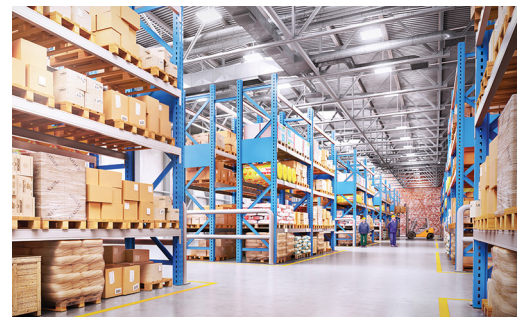
- One or multi-year commitments are possible ... ask your aggregator
- Potential for guaranteed payment rate for **three years or more**
- Aggregators make long-term commitments to NYSEG in exchange for **more reliable load relief performance** from you within our Term-DLM and and Auto-DLM programs

Commercial System Relief Program (CSRP) and Term-DLM are programs designed to reduce load on the hottest days of the summer.

| Feature | CSRP | Term-DLM |
|-----------------------------|-----------------------------------|---|
| Call Windows | 4 hours | 4 hours |
| Test Events | 1 hour | 1 hour |
| Period events can be called | Weekdays within call windows | Weekdays within call windows |
| Event calling parameters | 92% of system peak load | 90% of system peak load or above |
| Notice prior to event | 21 hours | 21 hours |
| Reservation Payments | \$4.10 per month, per kW | Variable depending on aggregator's contract terms |
| Penalties | No penalties for poor performance | Potential aggregator penalties for poor performance |
| Performance Payments | \$0.50 per kWh | \$0.50 per kWh for all events |

Auto-DLM is an emergency program designed to respond to local grid conditions. Quick response requirements for Auto-DLM create opportunities for batteries to enroll.

| Feature | Auto-DLM |
|-----------------------------|---|
| Event Length | 4 hours |
| Test Events | 1 hour |
| Period events can be called | 7 days per week, 6 a.m. – Midnight |
| Event calling parameters | When there is an eligible grid emergency in a network |
| Will be called for Term-DLM | Yes |
| Notice prior to event | 10 minutes |
| Reservation Payments | Variable depending on aggregator's contract terms |
| Penalties | Potential aggregator penalties for poor performance |
| Performance Payments | \$0.50 per kWh for all events |



TO LEARN MORE, VISIT:
nyseg.com/CIDR