


**NOTES:**

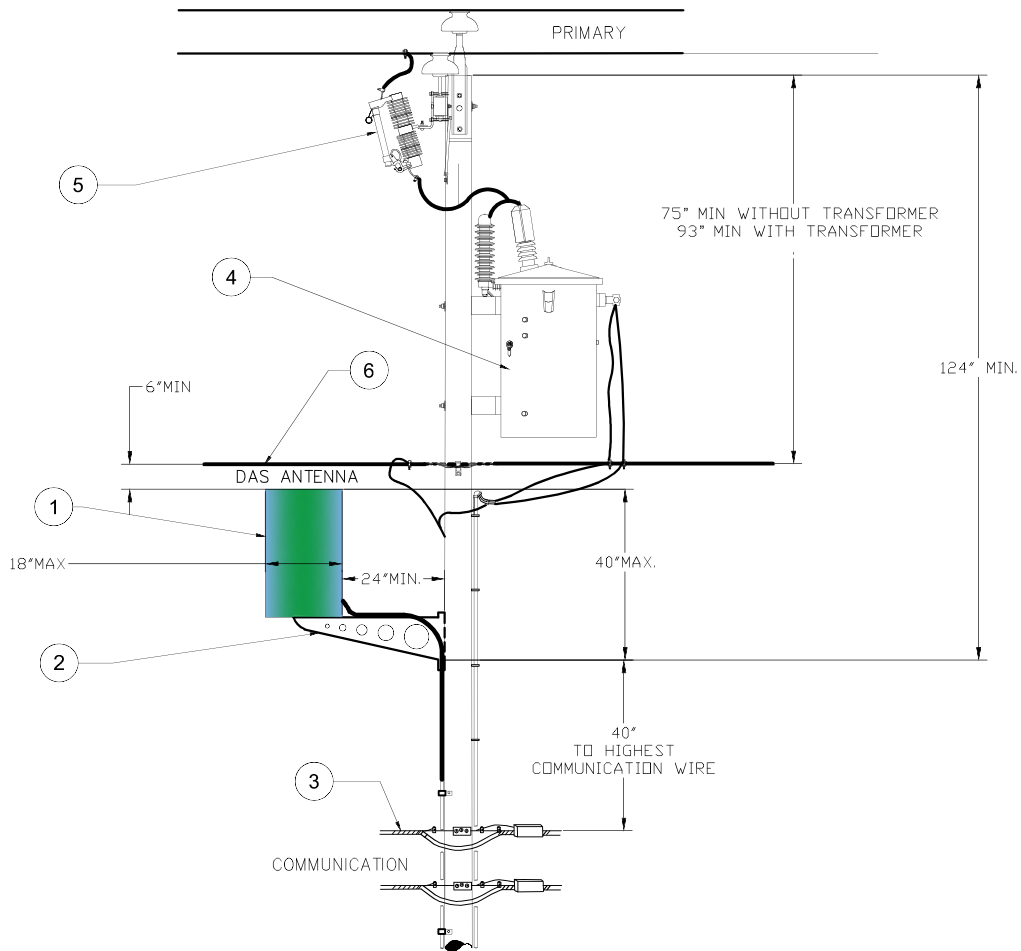
1. Maximum Allowable weight of Antenna with Bracket - 100 lbs
2. Minimum distance above ground to Antenna Centerline - 25 feet
3. Equipment Cabinet Maximum Height - 60 inches
4. Equipment Cabinet Maximum Width - 24 inches
5. Equipment Cabinet Maximum Depth - 24 inches
6. Maximum Allowable Weight of Cabinet - 400 pounds
7. List of Pole types Excluded from Antenna Installation:
  - a. Transmission Facilities without Distribution Underbuild
  - b. Poles older than 50 years
  - c. Poles class 5 or smaller
  - d. Push Brace poles
  - e. Poles 35 Feet or less
  - f. Truss/ C-Truss poles
  - g. Poles with utility equipment (Utilization Transformers, Step transformers, Capacitors, Voltage Regulators, Reclosers, Fuse Cutouts, Sectionalizers, SCADA Switches, Wireless SCADA Devices, Group Operated Switches, Primary Risers, Neutral Isolators, poles with series street lighting)
  - h. Poles with the following equipment - Wireless Communication Equipment, CATV Power supply, Electric Metered devices
  - i. Streetlight circuit poles that are >1 pole off the regular distribution/primary poles
  - j. Poles with Spacer Cable construction
8. Locate Meter Box on Opposite Side of Pole From Traffic Flow
9. Electrical Inspection Agency Approval Required for all Electric Service Work
10. Meter Box Furnished and Installed by Wireless Provider
11. Electric Service Requires Minimum 100 amp Conductor
12. Electric Service -From Weatherhead To Meter Box To Disconnects Switch Shall Be in Schedule 80 Non-Metallic Conduit With Weatherhead
13. Installation Of Electric Service Items Above Communication Lines Requires a Qualified Electrical Line Worker.
14. Item#8 -Minimum 100 Amp Disconnect Switch Accessible To All Pole Workers Is Required
15. Separate Wireless Equipment Ground Conductor Shall Be #4 Copper Under Protective Cover or 7/.062 Copper Clad Steel. NYSEG/RGE Downgrounds Shall not be Utilized
16. NYSEG/RGE will Connect any of Their Ground Rods to the Wireless Equipment Grounding System
17. NYSEG / RGE and / or Jointly Owned Poles to be used for Metering Only When Wireless Company Has a Valid Wireless Pole Attachment Agreement Included.

AVANGRID ENGINEERING CONFIDENTIAL, PROPRIETARY and TRADE SECRET INFORMATION Property of AVANGRID, Inc.				 AVANGRID		NYSEG/RGE STANDARD FOR WIRELESS DAS EQUIPMENT INSTALLATION	
				DISTRIBUTION CONSTRUCTION STANDARDS			
				DR.	ENW	FILE:	
01	10/15/2020	E.N.W	TEXT UPDATES ADDED 71 & RECLOSER/FUSE CUTOUT	CK.		SCALE: NTS	SHEET 1 OF 4
00	07/29/16	E.N.W	INITIAL DRAWING	APP.	GPA	NO.	REV.
REV.	DATE	BY	DESCRIPTION	APP.	DATE: 7/29/16	TM2.23.30	00

ANSI A CADD Drawing, DO NOT REVISE MANUALLY.

CADD Drawing, DO NOT REVISE MANUALLY.

ANSI A



ITEM	DESCRIPTION	COMMENTS
1	DAS ANTENNA	
2	BRACKET, DAS ANTENNA	
3	HIGHEST COMMUNICATION CABLE	
4	DISTRIBUTION TRANSFORMER (IF REQUIRED)	
5	CUTOUT FOR DISTRIBUTION TRANSFORMER	
6	UTILITY NEUTRAL CONDUCTOR AND/OR SECONDARY	

**AVANGRID ENGINEERING**  
**CONFIDENTIAL, PROPRIETARY**  
**and TRADE SECRET INFORMATION**  
Property of AVANGRID, Inc.

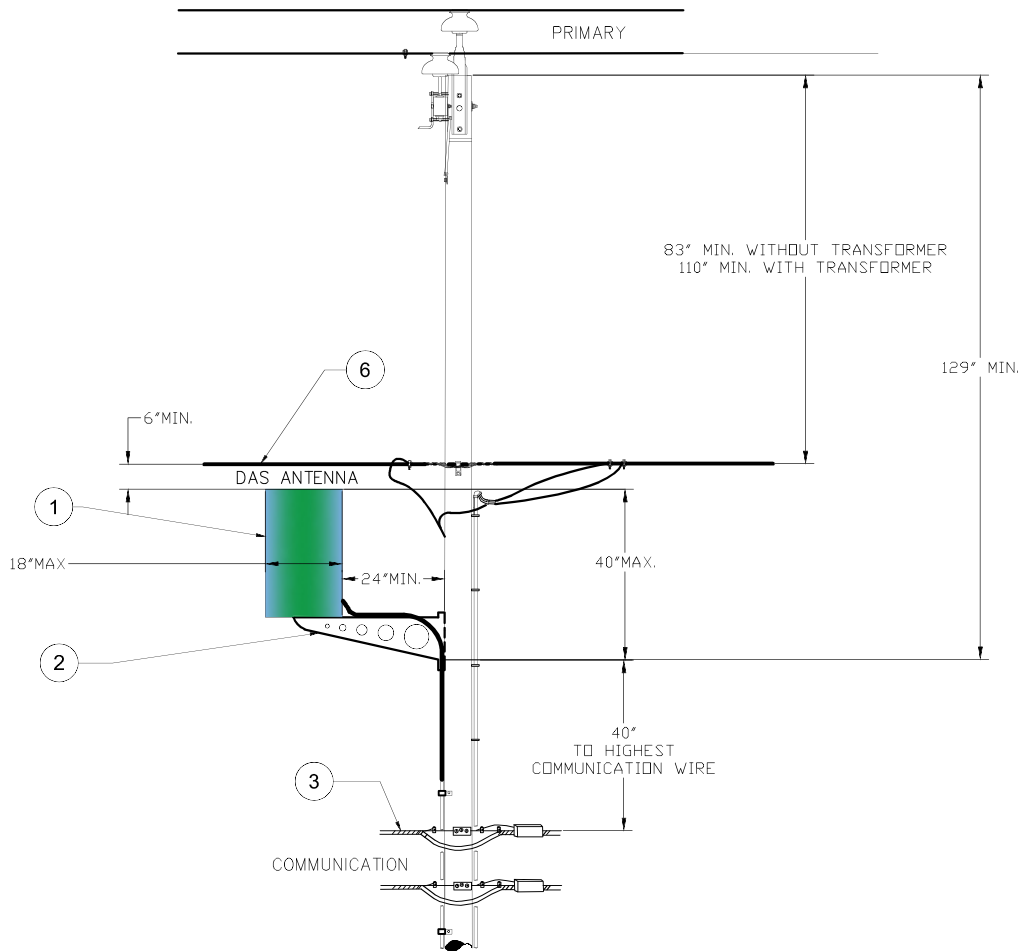


**AVANGRID**

NYSEG/RGE 15kV STANDARD FOR  
WIRELESS DAS EQUIPMENT INSTALLATION

DISTRIBUTION CONSTRUCTION STANDARDS

					DR. ENW	FILE:
					CK.	SCALE: NTS SHEET 2 OF 4
00	07/29/16	ENW	INITIAL DRAWING		APP. GPA	NO. TM2.23.30
REV.	DATE	BY	DESCRIPTION	APP.	DATE: 7/29/16	REV. 00



ITEM	DESCRIPTION	COMMENTS
1	DAS ANTENNA	
2	BRACKET, DAS ANTENNA	
3	HIGHEST COMMUNICATION CABLE	
4	DISTRIBUTION TRANSFORMER (IF REQUIRED)	
5	CUTOUT FOR DISTRIBUTION TRANSFORMER	
6	UTILITY NEUTRAL CONDUCTOR AND/OR SECONDARY	

**AVANGRID ENGINEERING**  
**CONFIDENTIAL, PROPRIETARY**  
**and TRADE SECRET INFORMATION**  
 Property of AVANGRID, Inc.



**AVANGRID**

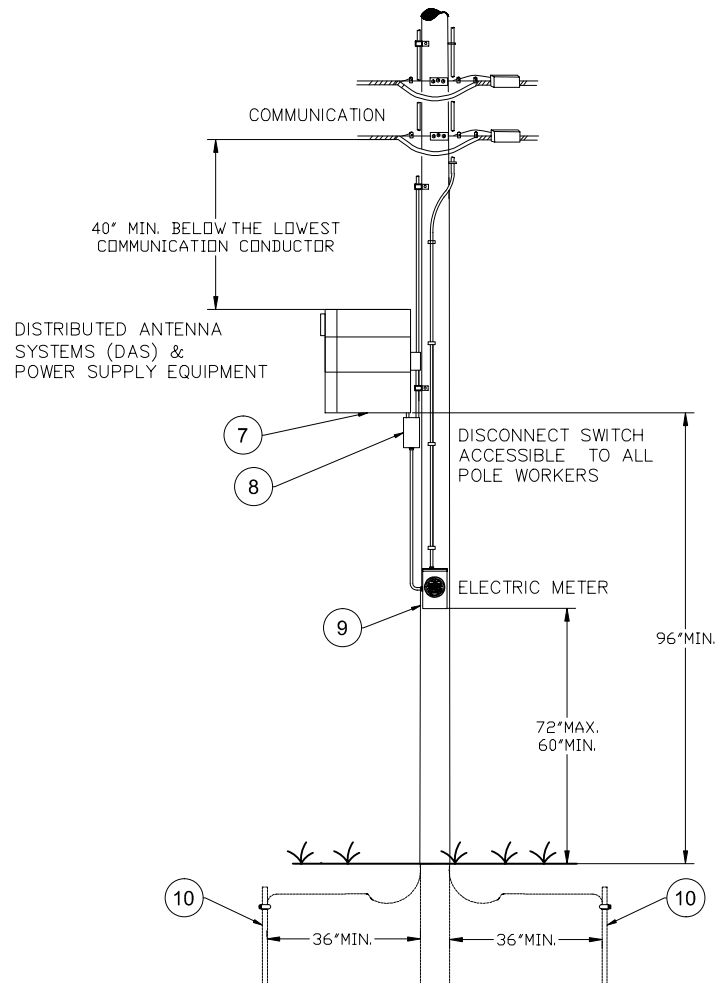
NYSEG/RGE STANDARD FOR  
 WIRELESS DAS EQUIPMENT INSTALLATION

DISTRIBUTION CONSTRUCTION STANDARDS

				DR.	ENW	FILE:	
				CK.		SCALE: NTS	SHEET 3 OF 4
00	07/29/16	E.N.W	INITIAL DRAWING	APP.	GPA	NO.	REV.
REV.	DATE	BY	DESCRIPTION	APP.	DATE: 7/29/16	TM2.23.30	00

ANSI A CADD Drawing, DO NOT REVISE MANUALLY.

ITEM	DESCRIPTION	COMMENTS
7	DAS EQUIPMENT & POWER SUPPLY	
8	DISCONNECT SWITCH	
9	UTILITY ELECTRIC METER	
10	GROUND RODS (2)	



**AVANGRID ENGINEERING**  
**CONFIDENTIAL, PROPRIETARY**  
**and TRADE SECRET INFORMATION**  
 Property of AVANGRID, Inc.



**AVANGRID**

NYSEG/RGE STANDARD FOR  
 WIRELESS DAS EQUIPMENT INSTALLATION

DISTRIBUTION CONSTRUCTION STANDARDS

DR.	ENW	FILE:	
CK.		SCALE: NTS	SHEET 4 OF 4
APP.	GPA	NO.	REV.
DATE: 7/29/16		TM2.23.30	00
REV.	DATE	BY	DESCRIPTION
00	07/29/16	ENW	INITIAL DRAWING

CADD Drawing, DO NOT REVISE MANUALLY.

ANSI A