



# NEW YORK STATE ELECTRIC & GAS Big Tree Substation

## CONTACT

Project Information Line: **888.794.4555**

## PROJECT OVERVIEW

As part of our commitment to provide safe and reliable service to all our customers, New York State Electric & Gas Corporation (NYSEG), in conjunction with our parent company, AVANGRID, is updating the delivery system in our service areas. These upgrades comply with new federal electric transmission reliability requirements. While making investments to meet the community's growing energy demands, we are working closely with our neighbors to ensure that all improvements are performed with minimal disruption to the environment and the community.

## PROJECT PURPOSE AND NEED

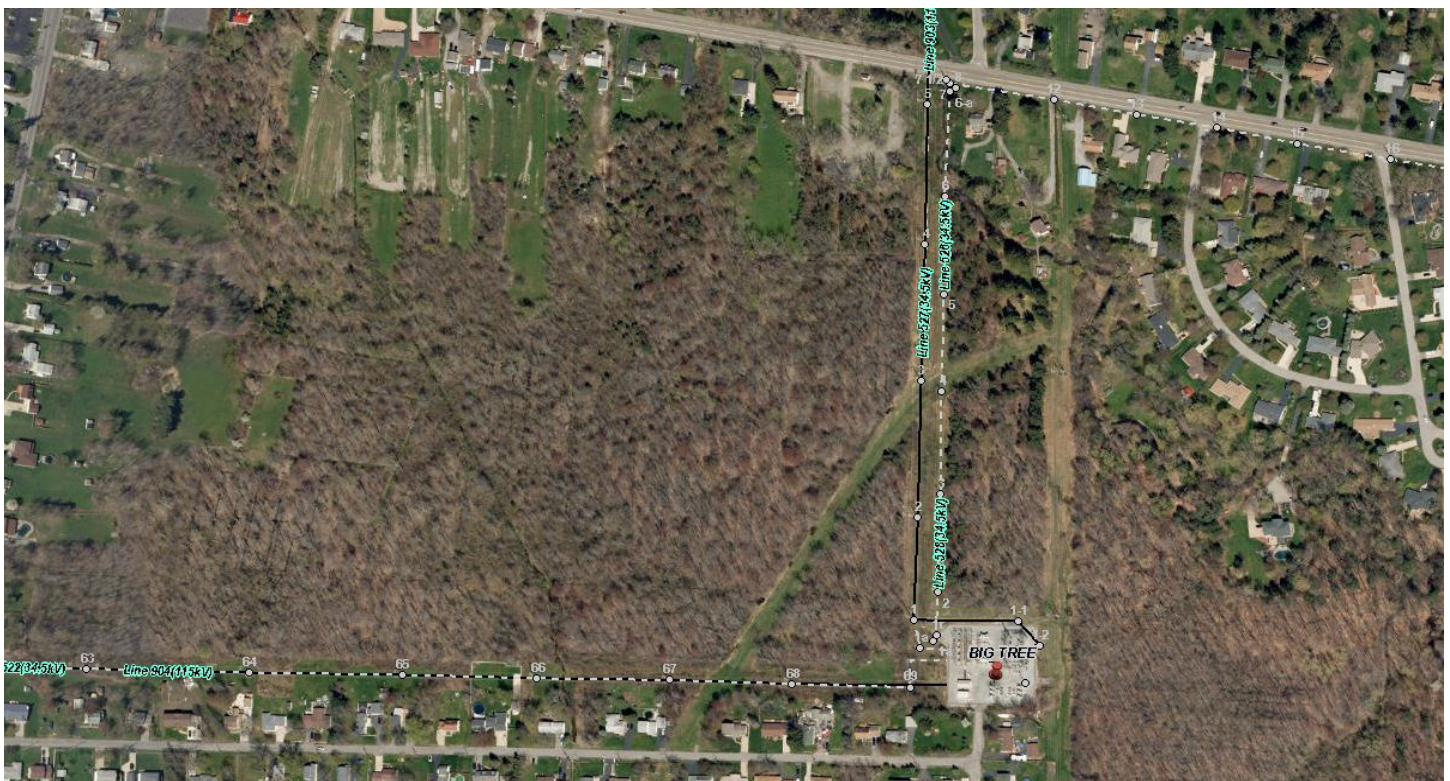
In 2010 the Federal Energy Regulatory Commission (FERC) established a "Brightline" threshold that redefined Bulk Electric System (BES) transmission elements as those operating at 100kV and above. In response, the North

American Electric Reliability Corporation (NERC) updated its reliability standards and issued a "Brightline Order." To comply with more stringent reliability standards issued at the federal level, we are planning an expansion on the north side of the existing Big Tree Substation in Orchard Park. Accordingly, a reconfiguring of the corresponding electric lines will also be performed.

These upgrades will enhance the integrity of the entire delivery system in the local area.

## PROJECT FACTS

Municipality:	Town of Orchard Park
County Impacted:	Erie
Permits:	Federal and State (Article VII Amendment)



Existing Big Tree Substation (red pin) and corresponding electric lines.



Proposed expansion at Big Tree Substation in Orchard Park.

### BIG TREE PROJECT SCOPE

- An expansion of the existing substation will be constructed adjacent to and north of the existing location.
- The substation's existing 115kV transmission lines will be reconfigured:
  - A National Grid 115kV line will be sectionalized and brought into the expanded substation.
  - NYSEG's two 115kV lines will be reconfigured.
- The projected cumulative length of transmission line reroutes required to establish connection between the existing lines and the substation is less than 1,000'.
- Additional minor reroutes of medium voltage distribution lines are planned as part of the substation expansion.
- A temporary access road, west of the existing permanent access road, will be constructed on Elmtree Road and will be removed upon completion of the project.
- Temporary and minor increases in construction-related traffic are expected during the project period.
- Public Outreach will be conducted via public information meetings, project Fact Sheets, and website updates.
- The project requires an amendment to a PSC Article VII Certificate.

### BENEFITS TO THE REGION

- The upgraded and expanded facilities will meet the growing demand for additional power in the Buffalo region.
- The additional energy brought into the area by the project will encourage and support expanded economic development.
- The upgrades will improve the reliability and resiliency of the entire transmission system, ensuring that the safe and reliable distribution of power is maintained.

<b>ESTIMATED TIMETABLE</b> <i>(subject to change)</i>	
Initial Field Work:	Completed
Article VII Amendment Application Filing:	Q3 2019
Construction Start:	Q2 2020
In Service Date:	Q1 2022